

What is a genetic condition?

A gene or chromosome fault can result in a genetic condition. Genes are the instructions that determine physical characteristics such as height, hair and eye colour, strength of our bones and the correct functioning of our bodies.

Genes are located on chromosomes inside the cells of our bodies. A genetic condition can run in families, but may occur without a previous family history.

About Genetic Support Groups

The diagnosis of a genetic condition in a family member, particularly a child, places enormous stress on a family. Individuals and families may feel the need for personal support offering a specialised understanding of their particular condition.

Genetic support groups can be a useful resource for individuals and families living with a genetic. Sharing their knowledge, experience and support are one of the key services that these groups are able to provide.

The GSCWA works to:

- Promote awareness and understanding of genetic disorders so that high quality services for people affected by genetic conditions are developed and made available to all who need them
- Provide information and advocacy to individuals and families living with a genetic conditions
- Foster research; and
- Encourage and support service delivery by Genetic Support Groups.

Contact us:

Please contact us for further information

Phone: 08 9485 8999

Email: info@geneticsupportcouncil.org.au

Web: www.geneticsupportcouncil.org.au

Office: Genetic Support Council WA
Suite 7 Oasis Lotteries House
37 Hampden Rd
NEDLANDS WA 6009

Office Hours: 9am - 4pm

Monday - Friday

Information current as of February 2011

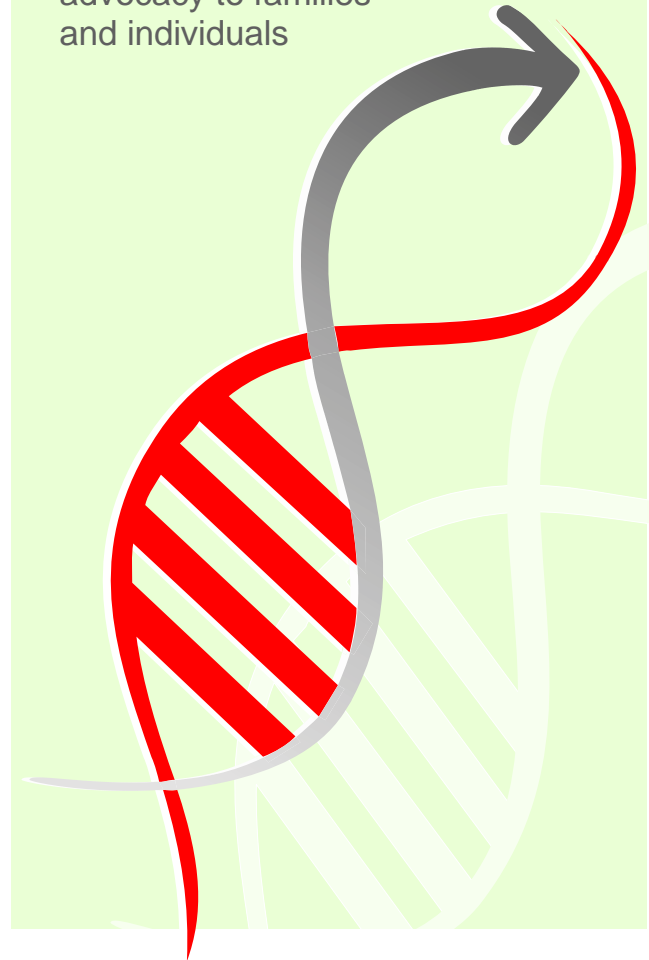


Genetic Support Council WA Inc

Promoting awareness and understanding of genetic conditions

Facilitating service delivery by Genetic Support Groups

Providing support and advocacy to families and individuals



Information and Support

The Genetic Support Council WA Inc provides information and support to individuals and families living with a genetic condition.

Our services include:

- Information on the services provided by genetic support groups. In Australasia there are hundreds of such groups, each focussing on a specific genetic condition. We can help put you in contact with these groups or provide support and guidance to help you establish a new support group
- A Resource Officer who can assist with enquiries and facilitate ongoing support for individuals, families, health professionals and other interested groups
- Resources relating to education, parenting, respite care, medical services and other community support organisations
- Information seminars
- Regular newsletters

The Council may also be able to provide information and support for conditions so rare that there is no specific support group.

Advocacy

The GSCWA conducts forums for members on issues of interest or concern to enable members views to be represented to the wider community and State and Federal Governments.

We also provide written and verbal submissions to Government and others in the field of genetics and participate with like bodies nationally to further represent Genetic Support Groups and their members.

Education

The GSCWA conducts information forums and awareness events to enable participants to increase their skills and knowledge and access up to date information about resources for people affected by genetic conditions and their families.

The GSCWA maintains an up-to-date website and publishes 'The Gene Advocate', a bi-monthly newsletter. The GSCWA's 'Directory of Genetic Support Groups and Community Service Organisations' is available online. A printed copy of the Directory is available from the office upon request.

Services to Support Groups

The GSCWA actively facilitates the development of Genetic Support Groups by providing expertise, information and technology including office facilities that can be accessed by members to further enable and support their activities.

We are able to assist groups and individuals with the development of resources such as information packages, pamphlets and the printing of promotional materials.

Members can publish articles and advertise and promote their Support Group's activities on the GSC website and in our newsletter the "Gene Advocate".

Staff are on hand to assist groups and individuals in researching information regarding particular genetic conditions or predispositions and help keep members aware of matters of interest such as changes of legislation etc.

There are no fees payable to become a member of the Genetic Support Council WA .

Please call us for further information or to access any of these services.

We are more than the sum of our genes!